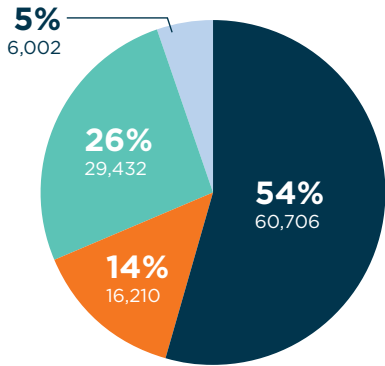


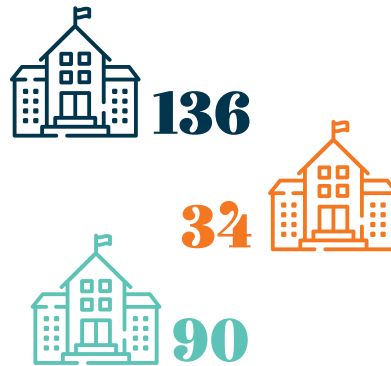
112,350

PUBLICLY FUNDED
STUDENTS



260

PUBLICLY FUNDED
SCHOOLS



3

MAIN PUBLICLY FUNDED
SCHOOL SECTORS

MILWAUKEE PUBLIC SCHOOLS (MPS)

Traditional public schools governed by the MPS superintendent and elected school board. Includes schools operated and staffed by MPS employees.

PUBLIC CHARTER SCHOOLS

Public schools independently operated under a contract with a public agency; schools are not staffed by MPS employees. Includes all autonomous (independent and non-instrumentality) charter schools.

PRIVATE SCHOOLS

Private schools governed by an independent entity, which may be religiously-affiliated. Includes students attending private schools in Milwaukee using a state-funded tuition voucher, plus private schools located outside the city limits but which serve 75+% Milwaukee students.

PUBLIC SCHOOLS OUTSIDE MILWAUKEE

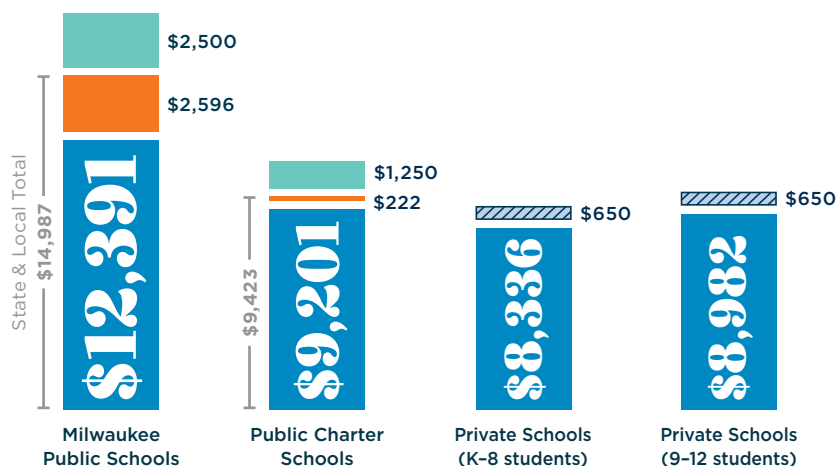
Includes Milwaukee students attending suburban public school districts through either the Open Enrollment or Chapter 220 programs.

ENROLLMENT BY STUDENT SUBGROUP

| | Milwaukee Public Schools | Public Charter Schools | Private Schools |
|----------------------------|--------------------------|------------------------|----------------------------|
| Black | 51% | 47% | 49% |
| Hispanic/Latino | 28% | 34% | 36% |
| Asian | 6% | 11% | 4% |
| White | 11% | 5% | 7% |
| Economic Disadvantage | 79% | 81% | 79% |
| Students With Disabilities | 20% | 11% | Not Available ¹ |

PER-PUPIL FUNDING BY SECTOR

Schools receive public funding for each student they enroll, but the amounts differ by school sector.



State and local base \$
\$ for general operating expenses

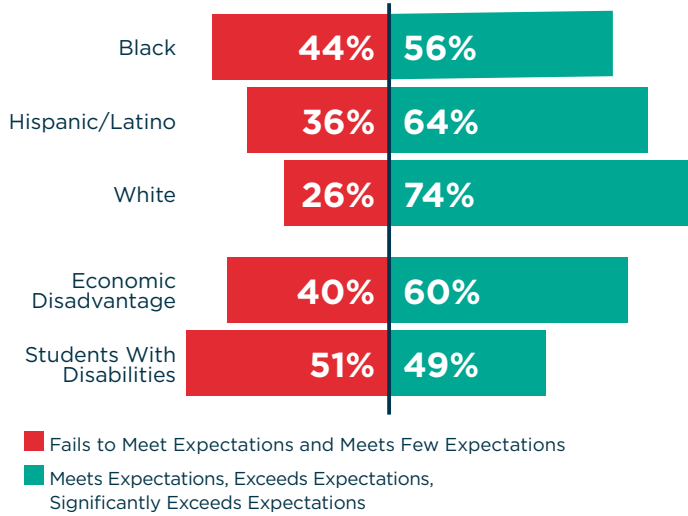
State categorical \$
Estimated average \$ dedicated for specific purposes

Federal categorical \$
Estimated average \$ dedicated for specific purposes

Federal categorical services
Estimated average \$ provided to MPS to expend on behalf of eligible private school students

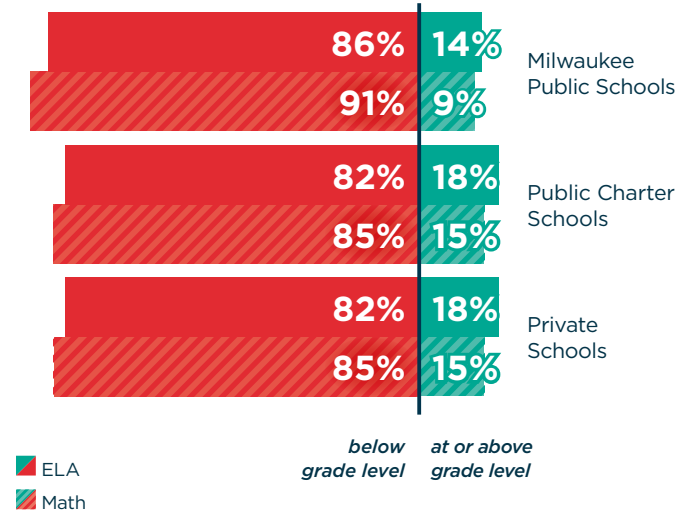
SCHOOL ACCESS DISPARITIES BY STUDENT SUBGROUP

Students with disabilities, Black students, and those from low-income households are most likely to attend failing schools.



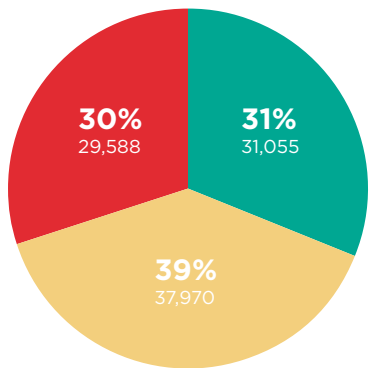
STUDENT PERFORMANCE BY SECTOR

Across all three sectors, fewer than one in five students are proficient in English Language Arts (ELA) and Mathematics.



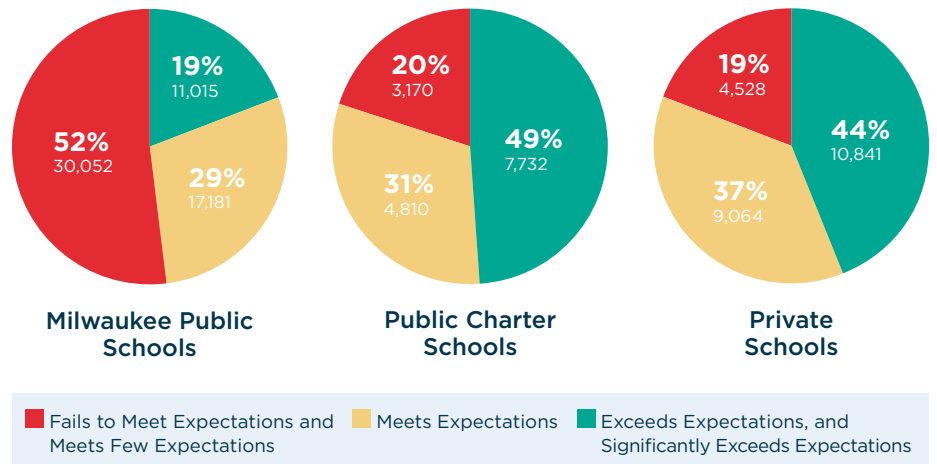
CITYWIDE SCHOOL PERFORMANCE

STUDENT ENROLLMENT BY STATE SCHOOL REPORT CARD RATING



SCHOOL PERFORMANCE BY SECTOR

STUDENT ENROLLMENT BY STATE SCHOOL REPORT CARD RATING



KEY TERMS

ECONOMIC DISADVANTAGE: Students come from a household with an income no greater than 185% of the federal poverty level.

STUDENTS WITH DISABILITIES: Students have a qualifying impairment requiring an individualized education plan (IEP) entitling them to additional learning supports and resources.

WISCONSIN SCHOOL REPORT CARD: Produced by the Wisconsin Department of Public Instruction by statutory mandate, this is the primary metric for measuring the quality of every publicly funded K-12 school.

LOCAL FUNDING: Local base funding is largely comprised of local property taxes, but also includes revenue from school meals, driver education fees, rental income, tuition, and other local sources. Property taxes are mostly controlled by district schools and directed to district-authorized charters. Independent charter schools and private schools do not receive local funds.

STATE FUNDING: State funding includes funds allocated by the Legislature and Governor in the state budget for school districts, independent charter schools, and private school choice programs (vouchers). It also includes categorical aids designated for specific purposes, such as economic disadvantaged students or students with disabilities, and which may be available to all or only some school sectors.

ABOUT THE DATA: All data are the most recent available and sourced from the Wisconsin Department of Public Instruction. Data exclude the 608 students attending 7 Partnership Schools, which are alternative private schools contracted by MPS to serve at-risk students. **1 STUDENTS WITH DISABILITIES:** Each school sector serves and counts students with disabilities in unique ways. Private schools are not required by state and federal law to identify or service students with disabilities in the same manner as MPS and Public Charter Schools. As a result, publicly available data undercounts private school students with disabilities.